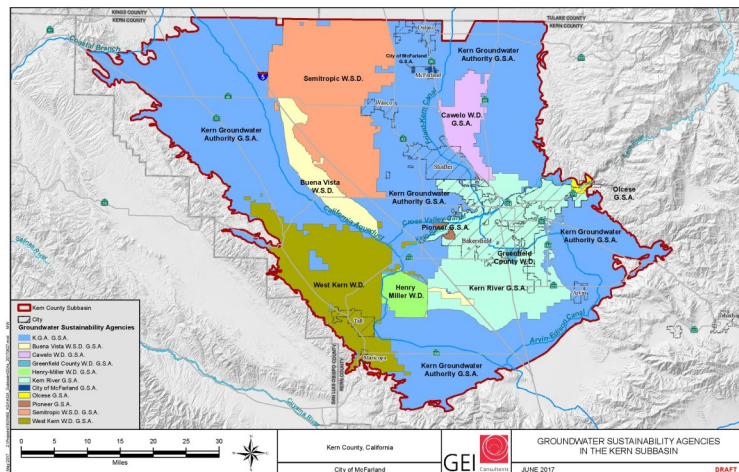


# Get to Know Your Groundwater Sustainability Agency: Kern Groundwater Authority Groundwater Sustainability Agency

## OVERVIEW

The Sustainable Groundwater Management Act (SGMA) is a new law that, once fully implemented, will fundamentally change the way we use and manage groundwater in California. The Act applies to areas that rely heavily on groundwater. The Act requires local agencies to form Groundwater Sustainability Agencies (GSAs) to manage and regulate groundwater. Once formed, these GSAs will have new powers, including the ability to limit or suspend groundwater pumping and charge fees for groundwater extraction and will be responsible for ensuring that groundwater conditions improve by 2040.



To do so, GSAs will need to develop and Implement Groundwater Sustainability Plans (GSPs). GSPs will need to document the groundwater conditions in the area; establish goals to prevent negative impacts; and identify projects and management actions that improve groundwater conditions.

## YOUR GSA AT A GLANCE

<b>GSA NAME</b>	Kern Groundwater Authority Groundwater Sustainability Agency	
<b>FORMED</b>	May 30, 2017	
<b>AGENCY TYPE</b>	Joint Powers Authority (A joint powers authority is a new entity which consists of two or more public agencies jointly exercising powers, limited by the combined territorial jurisdictions of the individual agencies.)	
<b>GSA MEMBER AGENCIES</b>	Arvin Community Services District, Arvin-Edison Water Storage District, Cawelo Water District, City of Shafter, Kern County, Kern-Tulare Water District, North Kern Water Storage District, Olcese Water District, Rosedale-Rio Bravo Water Storage District, Semitropic Water Storage District, Shafter-Wasco Irrigation District, Southern San Joaquin Municipal Utility District, Tejon-Castaic Water District, West Kern Water District, Westside District Water Authority, Wheeler Ridge-Maricopa Water Storage District.	
<b>GSA BOUNDARIES</b>	Delano, Wasco, Shafter, Arvin, Lamont, Mettler, Pond, Lost Hills and Weedpatch	
<b>BOARD OF DIRECTORS</b>	Joe MacIvaine, Westside District Water Authority (Board President) David Couch, Kern County (Vice President)  Raul Barraza, Jr., Arvin CSD Kevin Pascoe, Arvin-Edison WSD Dave Fenn, Cawelo WD Scott Hurlbert, City of Shafter Royce Fast, Kern County Water Agency Andrew Pandol, Kern-Tulare WD Bill Taube, Kern Water Bank Authority	Jason Selvidge, Rosedale-Rio Bravo WSD Rick Wegis, Semitropic WSD Mark Franz, Shafter-Wasco ID Jim Regan, SSJMUD Dennis Atkinson, Tejon-Castaic WD Gary Morris, West Kern WD Dennis Mullins, Wheeler Ridge-Maricopa WSD
<b>GSA MEETINGS</b>	Meeting held on the last Wednesday of each month at 8:00 am at 1115 Truxtun Ave, Bakersfield, CA 93301, 3rd floor conference room	
<b>COMMITTIES</b>	None	

## GET INVOLVED!

*Most unincorporated communities in the San Joaquin Valley are solely reliant on groundwater for drinking water. Many more residents rely on private wells. SGMA intends to bring different water users together to decide how to use and manage groundwater. As a result, decisions made by the GSAs will affect residents in rural communities.*

### **Get involved and HELP your GSA:**

- **Understand the groundwater challenges affecting rural unincorporated communities and/or private wells.**
- **Identify and develop projects that improve groundwater conditions in your community.**
- **Identify ways to keep rates affordable.**

### **Ways to Get Involved:**

- Register as an interested party for the GSA to receive notices of meetings and important information about Groundwater Sustainability Plan (GSP) development.
- Attend the GSA board and/or committee meetings. Give public comment or ask questions about their work.
- **Apply to serve on a committee.**

## CONTACT INFORMATION

### **Kern Groundwater Authority GSA:**

Eric Averett, (661) 589-6045, [eaverett@rrbwsd.com](mailto:eaverett@rrbwsd.com)

### **Community Water Center:**

Adriana Renteria, (559) 733-0219, [Adriana.Renteria@communitywatercenter.org](mailto:Adriana.Renteria@communitywatercenter.org)

### **Department of Water Resources (DWR) Regional SGMA Coordinator:**

Amanda Peisch-Derby, (559) 230-3307, [Amanda.Peisch@water.ca.gov](mailto:Amanda.Peisch@water.ca.gov)

