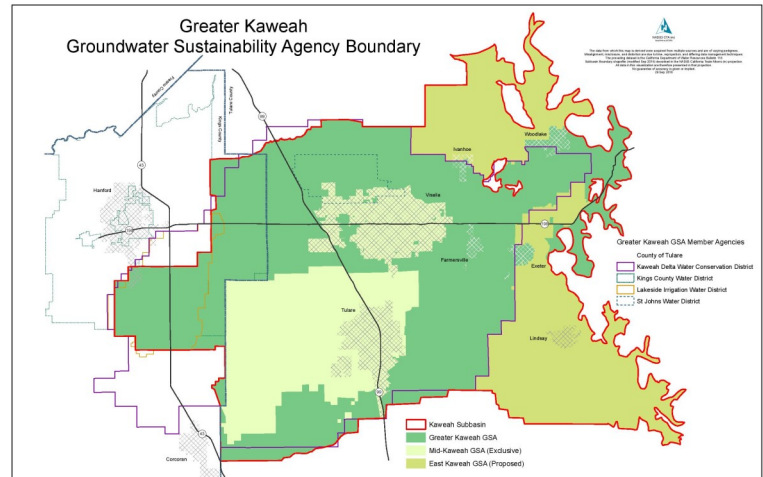


Get to Know Your Groundwater Sustainability Agency: Greater Kaweah Groundwater Sustainability Agency

OVERVIEW

The Sustainable Groundwater Management Act (SGMA) is a new law that, once fully implemented, will fundamentally change the way we use and manage groundwater in California. The Act applies to areas that rely heavily on groundwater. The Act requires local agencies to form Groundwater Sustainability Agencies (GSAs) to manage and regulate groundwater. Once formed, these GSAs will have new powers, including the ability to limit or suspend groundwater pumping and charge fees for groundwater extraction and will be responsible for ensuring that groundwater conditions improve by 2040.



To do so, GSAs will need to develop and Implement Groundwater Sustainability Plans (GSPs). GSPs will need to document the groundwater conditions in the area; establish goals to prevent negative impacts; and identify projects and management actions that improve groundwater conditions.

YOUR GSA AT A GLANCE

GSA NAME	Greater Kaweah Groundwater Sustainability Agency
FORMED	June 17, 2016
AGENCY TYPE	Joint Powers Authority (A joint powers authority is a new entity which consists of two or more public agencies jointly exercising powers, limited by the combined territorial jurisdictions of the individual agencies.)
GSA BOUNDARIES	Woodlake, Tract 92, Patterson Tract, City of Exeter, City of Farmersville, Ivanhoe, Lemon Cove
BOARD OF DIRECTORS	Don Mills, Chairman (Lakeside Irrigation District) Chris Tantau, Vice Chairman (Kaweah Delta Water Conservation District) Brian Watte (Kaweah Delta Water Conservation District) Pete Vander Poel (County of Tulare) Ernie Taylor (Kings County Water District) Greg Milleman (California Water Service Company) Eric Shannon (St. Johns Water District) Paul Boyer (Rural Communities Committee) Joe Cardoza (Stakeholder Committee)
GSA MEETINGS	Second Monday of the month at 1:00 pm at 2975 N. Farmersville Blvd, Farmersville, CA 93223
COMMITTEES	Rural Communities Committee – Includes representatives of public water systems such as cities, public utility districts and community service districts. Stakeholder Committee – Includes representatives who fall within the category of interested persons or representatives of interested entities as described in Water Code Section 10723.2. Technical Advisory Committee – The committee is made of consultants, staff and expert’s appointment by the Board of Directors to work on technical components of the groundwater sustainability plans.

GET INVOLVED!

Most unincorporated communities in the San Joaquin Valley are solely reliant on groundwater for drinking water. Many more residents rely on private wells. SGMA intends to bring different water users together to decide how to use and manage groundwater. As a result, decisions made by the GSAs will affect residents in rural communities.

Get involved and HELP your GSA:

- **Understand the groundwater challenges affecting rural unincorporated communities and/or private wells.**
- **Identify and develop projects that improve groundwater conditions in your community.**
- **Identify ways to keep rates affordable.**

Ways to Get Involved:

- Register as an interested party for the GSA to receive notices of meetings and important information about Groundwater Sustainability Plan (GSP) development.
- Attend the GSA board and/or committee meetings. Give public comment or ask questions about their work.
- **Apply to serve on a committee.**

CONTACT INFORMATION

Greater Kaweah GSA:

Mark Larsen (Coordinator), (559) 747-5601, mlarsen@kdwcd.com

Community Water Center:

Adriana Renteria, (559) 733-0219, Adriana.Renteria@communitywatercenter.org

Department of Water Resources (DWR) Regional SGMA Coordinator:

Amanda Peisch-Derby, (559) 230-3307, Amanda.Peisch@water.ca.gov

