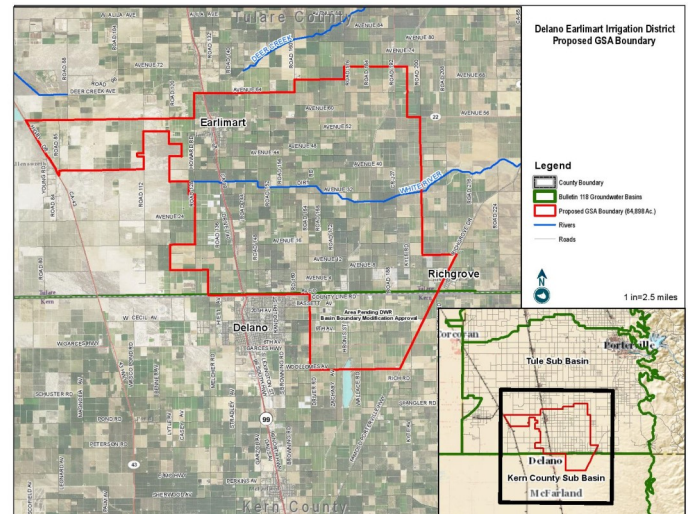


Get to Know Your Groundwater Sustainability Agency: Delano-Earlimart Irrigation District GSA

OVERVIEW

The Sustainable Groundwater Management Act (SGMA) is a new law that, once fully implemented, will fundamentally change the way we use and manage groundwater in California. The Act applies to areas that rely heavily on groundwater. The Act requires local agencies to form Groundwater Sustainability Agencies (GSAs) to manage and regulate groundwater. Once formed, these GSAs will have new powers, including the ability to limit or suspend groundwater pumping and charge fees for groundwater extraction and will be responsible for ensuring that groundwater conditions improve by 2040.



To do so, GSAs will need to develop and Implement Groundwater Sustainability Plans (GSPs). GSPs will need to document the groundwater conditions in the area; establish goals to prevent negative impacts; and identify projects and management actions that improve groundwater conditions.

YOUR GSA AT A GLANCE

GSA NAME	Delano-Earlimart Irrigation District Groundwater Sustainability Agency
FORMED	September 2016
AGENCY TYPE	Existing agency (Irrigation District will assume role and responsibility of a GSA in addition to its role as an irrigation district)
GSA BOUNDARIES	The Delano-Earlimart Irrigation District and the Earlimart Public Utility District (which includes the community of Earlimart).
BOARD OF DIRECTORS	Division 1: Kelley Hampton (President) Division 2: Nick Canata Division 3: Harold Nelson Division 4: Mark Kovacevich Division 5: Peter Hronis (Vice President)
GSA MEETINGS	The DEID GSA holds monthly stakeholder meetings to review the planning process and to receive stakeholder input on important components of the GSP. Meeting dates and times are announced in advance through a monthly SGMA newsletter that is emailed to all interested parties. Stakeholder meetings are held at the District office at 14181 Avenue 24, Delano, California 93215.
COMMITTEES	Tule Sub-basin Technical Advisory Committee – Meets at Lower Tule River Irrigation District Office. Tule Sub-basin Stakeholder Committee – Meets quarterly at 2:00-4:00 pm at Lower Tule River Irrigation District Office.

GET INVOLVED!

Most unincorporated communities in the San Joaquin Valley are solely reliant on groundwater for drinking water. Many more residents rely on private wells. SGMA intends to bring different water users together to decide how to use and manage groundwater. As a result, decisions made by the GSAs will affect residents in rural communities.

Get involved and HELP your GSA:

- **Understand the groundwater challenges affecting rural unincorporated communities and/or private wells.**
- **Identify and develop projects that improve groundwater conditions in your community.**
- **Identify ways to keep rates affordable.**

Ways to Get Involved:

- Register as an interested party for the GSA to receive notices of meetings and important information about Groundwater Sustainability Plan (GSP) development.
- Attend the GSA board and/or committee meetings. Give public comment or ask questions about their work.
- **Apply to serve on a committee.**

CONTACT INFORMATION

East Kaweah GSA:

Michael Hagman, (559) 562-2534, mhagman@lindmoreid.com

Community Water Center:

Adriana Renteria, (559) 733-0219, Adriana.Renteria@communitywatercenter.org

Self-Help Enterprises:

Maria Herrera, (559) 802-1676, MariaH@selfhelpenterprises.org

Department of Water Resources (DWR) Regional SGMA Coordinator:

Amanda Peisch-Derby, (559) 230-3307, Amanda.Peisch@water.ca.gov

